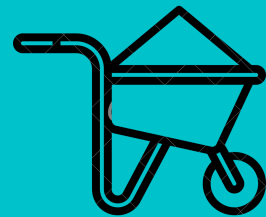




Consortio de Gestión
del Puerto de Dock Sud

ÁRIDOS Y
MINERALES



949.629

COMBUSTIBLES
LÍQUIDOS Y GASES



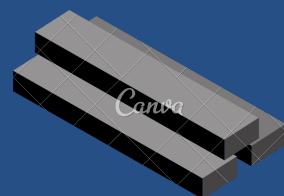
4.570.210

CARGA
CONTENERIZADA



4.372.038

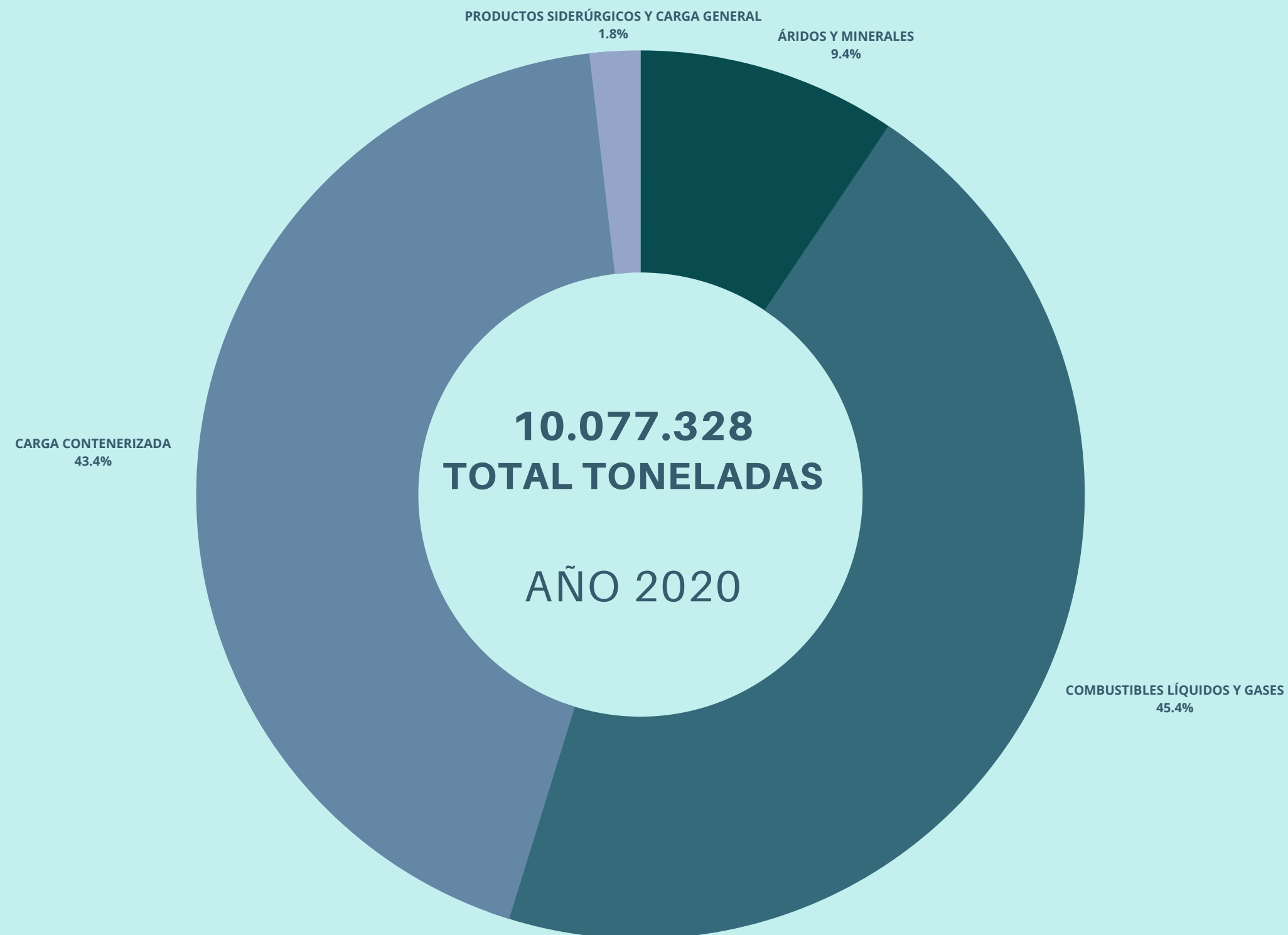
PRODUCTOS
SIDERÚRGICOS Y
CARGA GENERAL



185.451

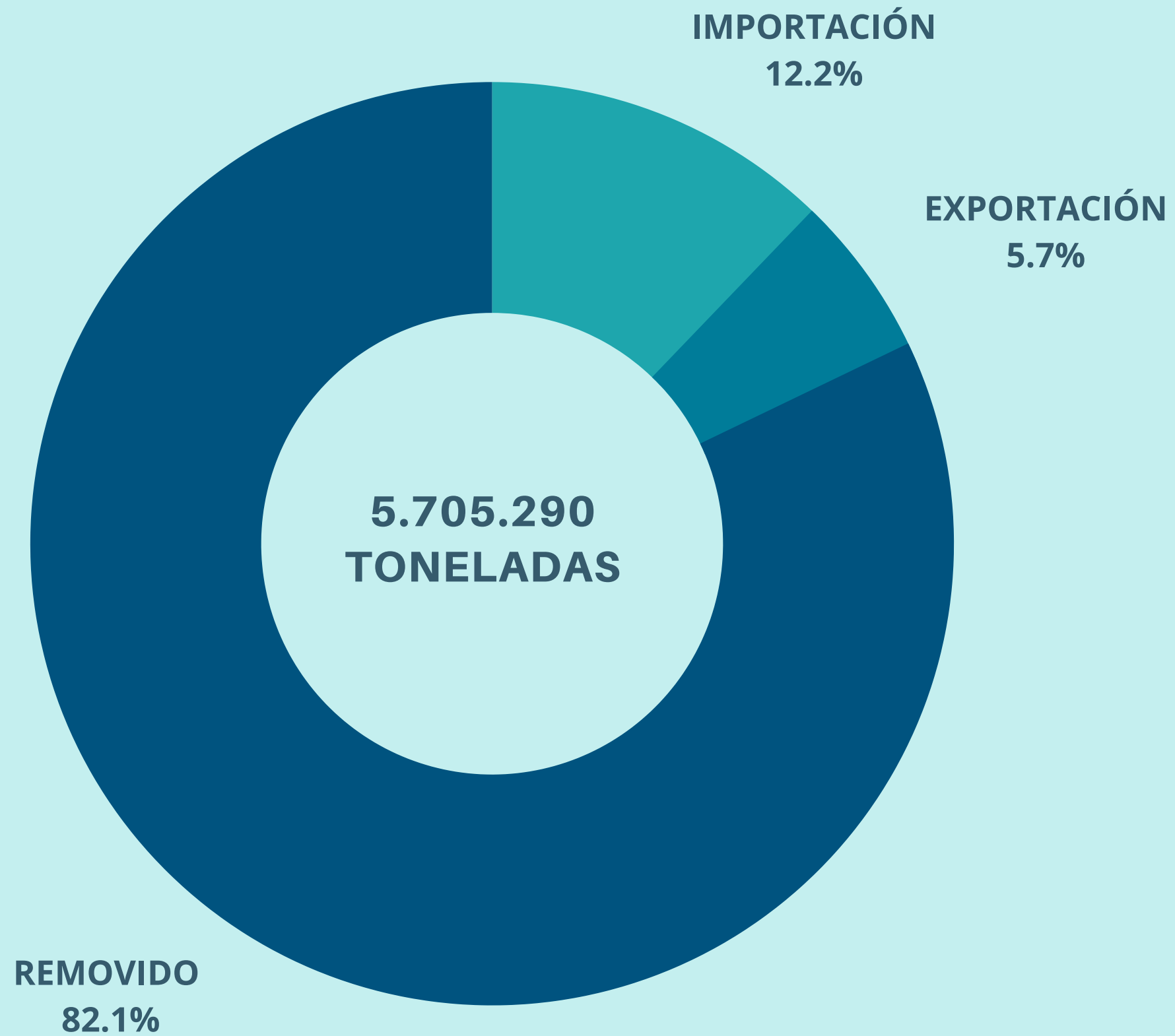
**AÑO
2020**

**TONELADAS
OPERADAS**





CARGA NO CONTENERIZADA





CARGA CONTENERIZADA

